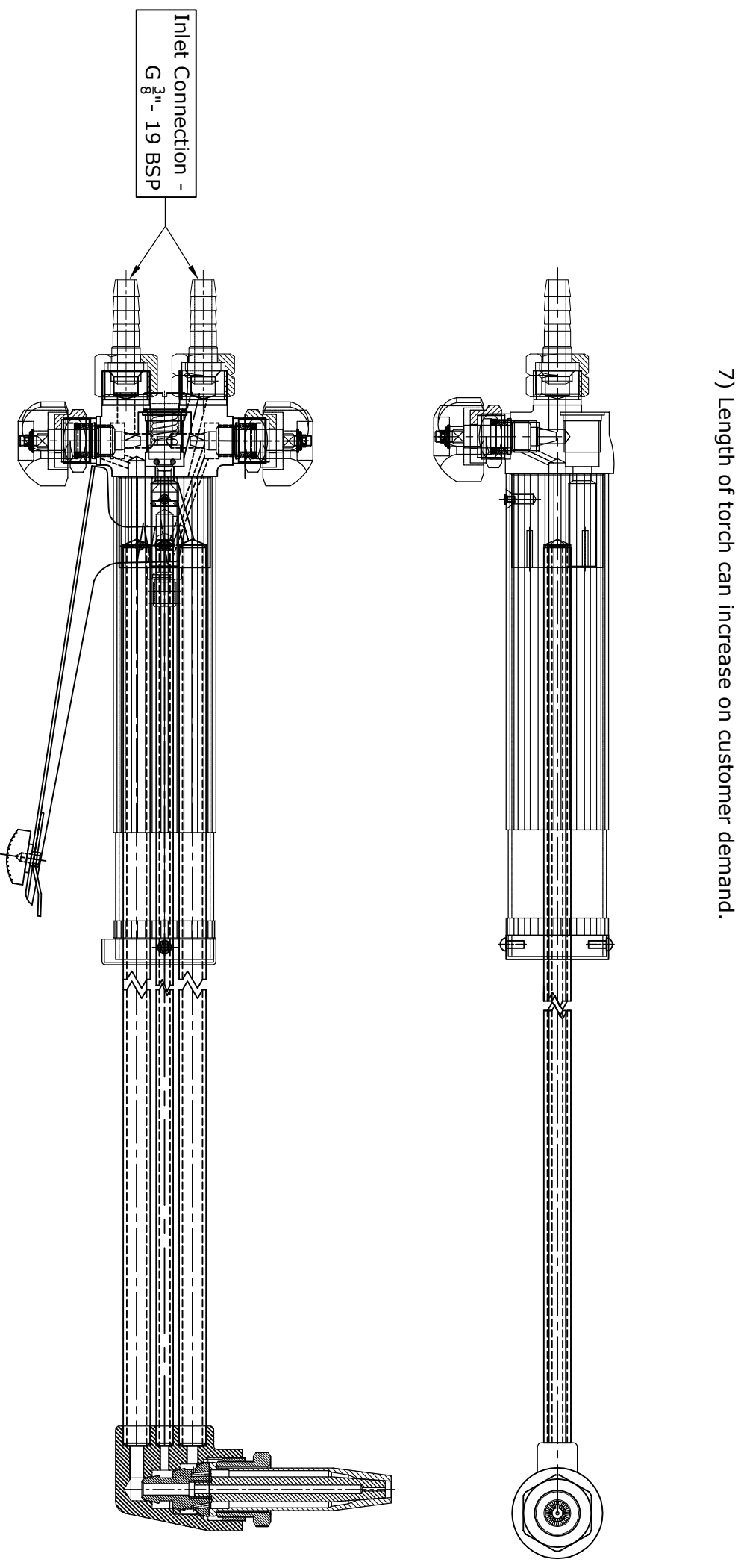


Specification:-

- 1) Gas Cutting Blow Pipe Bend Head (Three Seated)
- 2) Head Type - 90 ° /180°
- 3) Inlet Hose Connection - G $\frac{3}{8}$ " - 19 BSP
- 4) Three Pipe used for heavy duty cutting.
- 5) Nozzle Type - Suitable for Acetylene & Propane
- 6) Back fire condition not comes due to Three seated nozzle and pipe.
- 7) Length of torch can increase on customer demand.



(CUTTING TORCH WITH HEAD 90°)