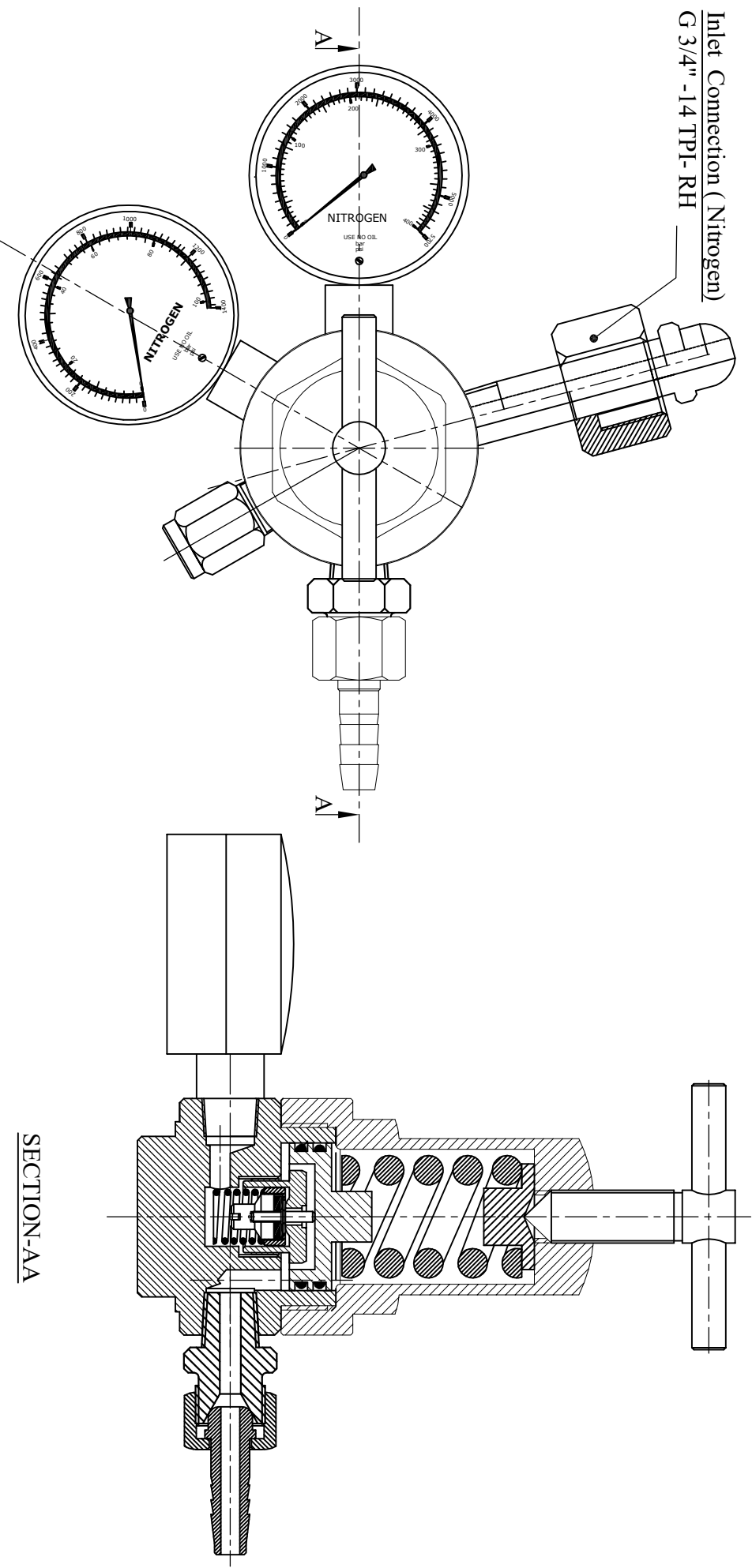


SPECIFICATION:-

1. DESIGN WORKING TEMPERATURE - (-20° C to +100 ° C)
2. REGULATOR INLET CONNECTION - G 3/4" -14 TPI (RH)
3. REGULATOR OUTLET PRESSURE - (0-28 kgf/cm2)
4. REGULATOR OUTLET CONNECTION - 3/8 " -19 BSP(RH)
5. PRESSURE GAUGE DIAMETER- 2 INCH
6. PRESSURE GAUGE CONNECTION SIZE- 1/4" - 18 NPT
7. PRV SET PRESSURE & SIZE RESPECTIVELY - 30 kgf/cm2 & 1/4" - 18 NPT

Inlet Connection (Nitrogen)
G 3/4" -14 TPI- RH



SECTION-AA