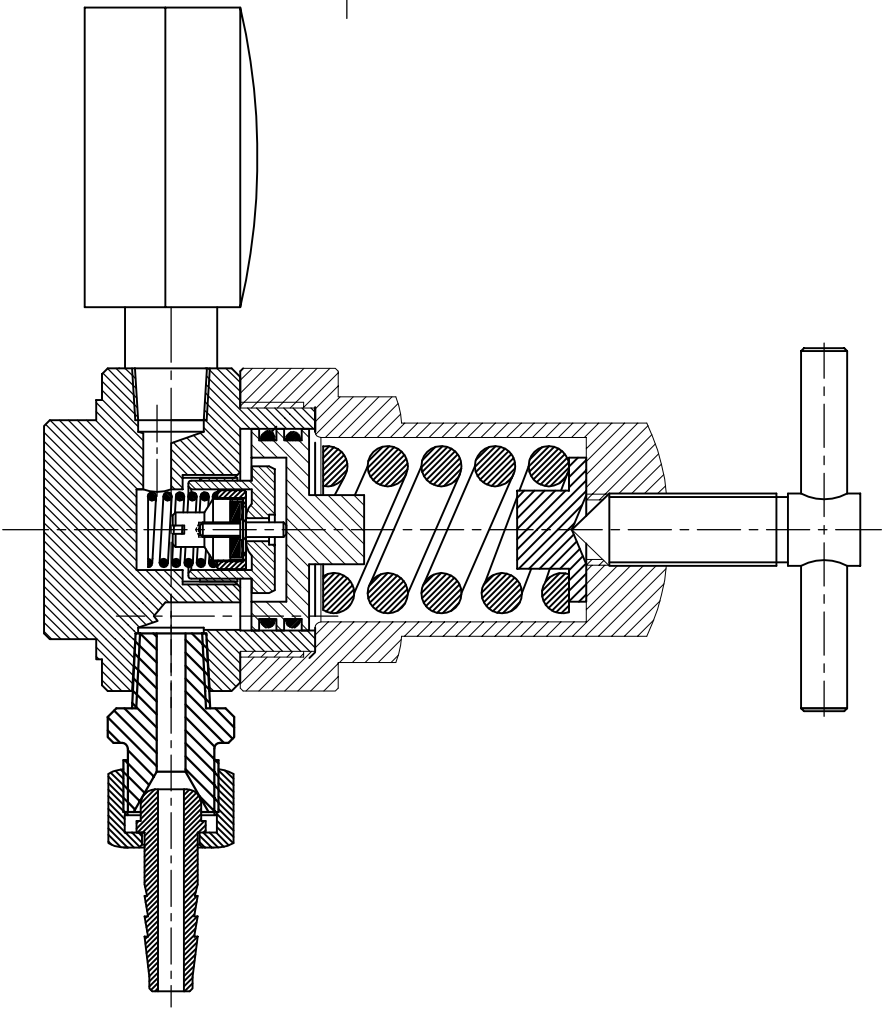
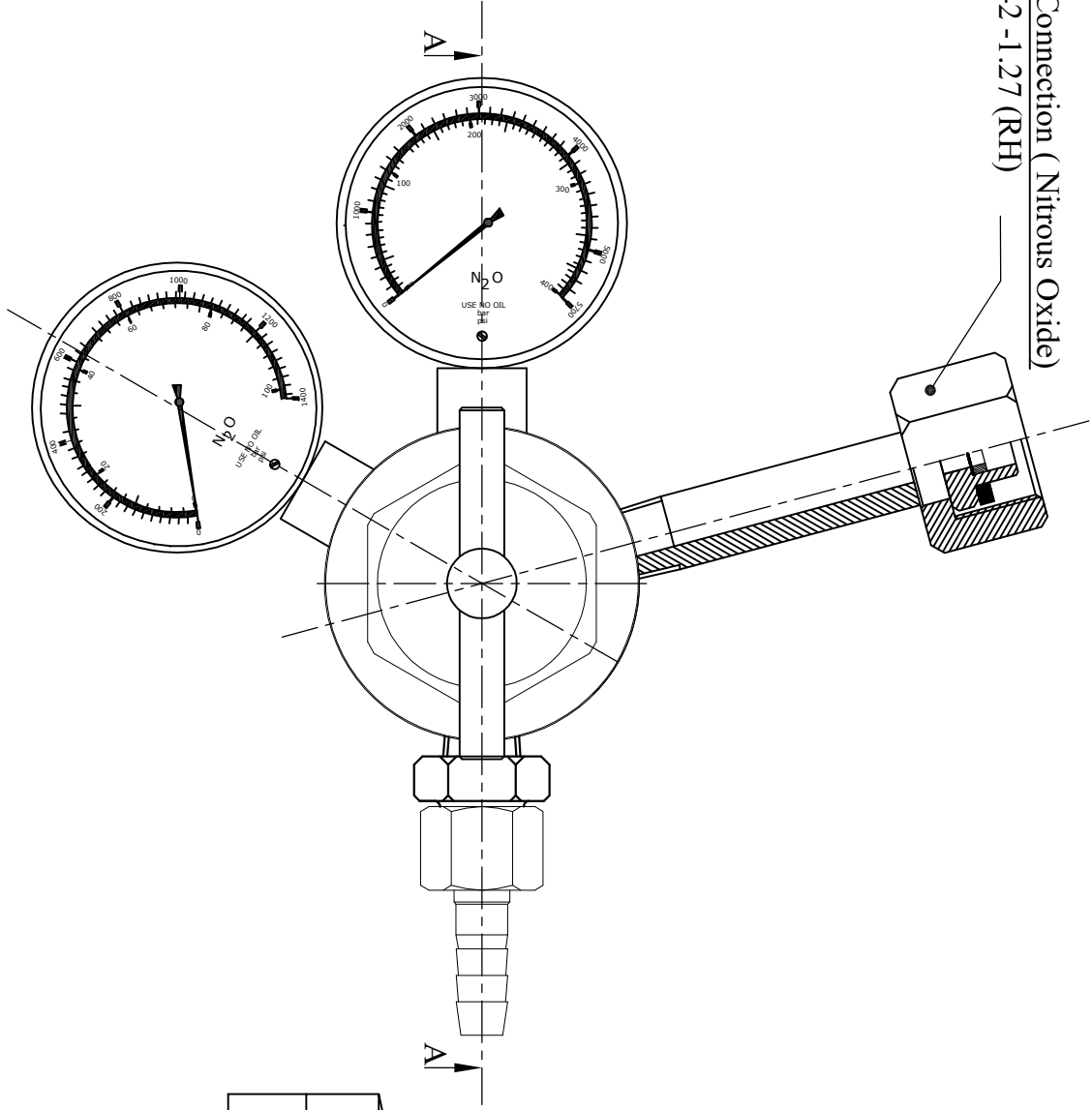


Specification :-

- 1. High Pressure Double Meter Nitrous Oxide Regulator
- 2. Piston Type Diaphragm to withstand with High Outlet Pressure
- 3. Inlet Pressure :- (0-400 Bar)
- 4. Outlet / Working Pressure :- (0-45 Bar)
- 5. Outlet Connection:- 3/8" - 19 BSP (RH)

Inlet Connection (Nitrous Oxide)

W17.42 -1.27 (RH)



SECTION-AA