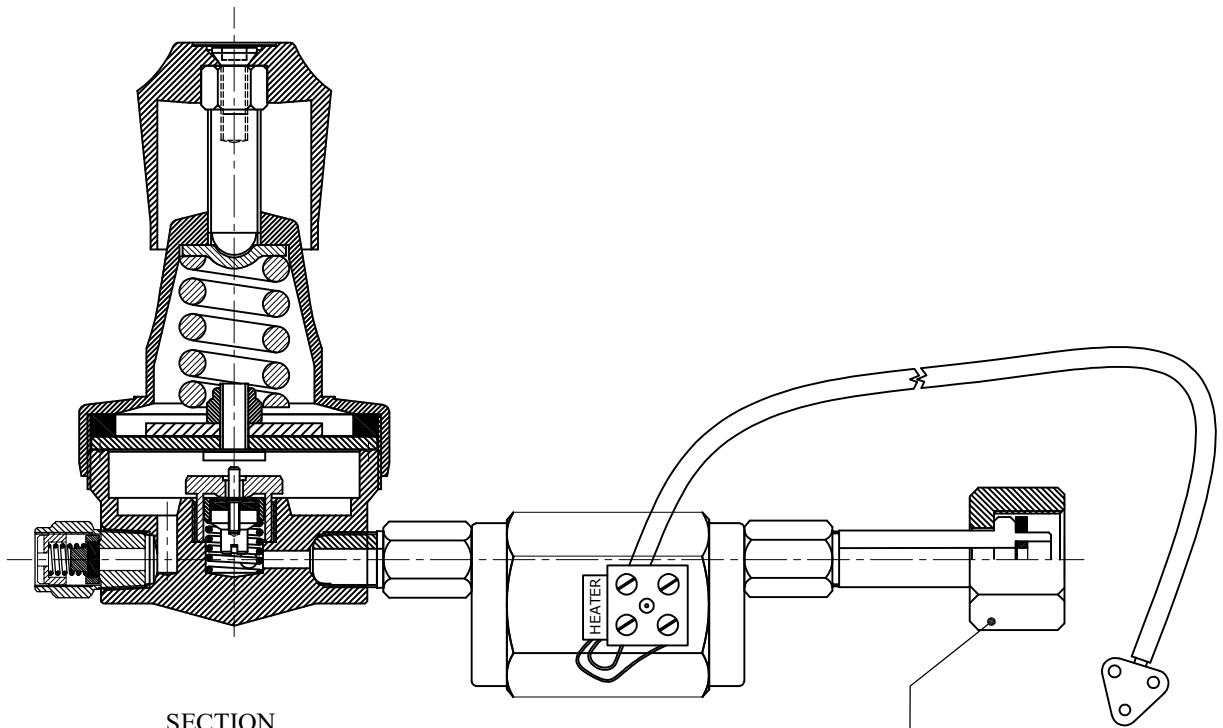
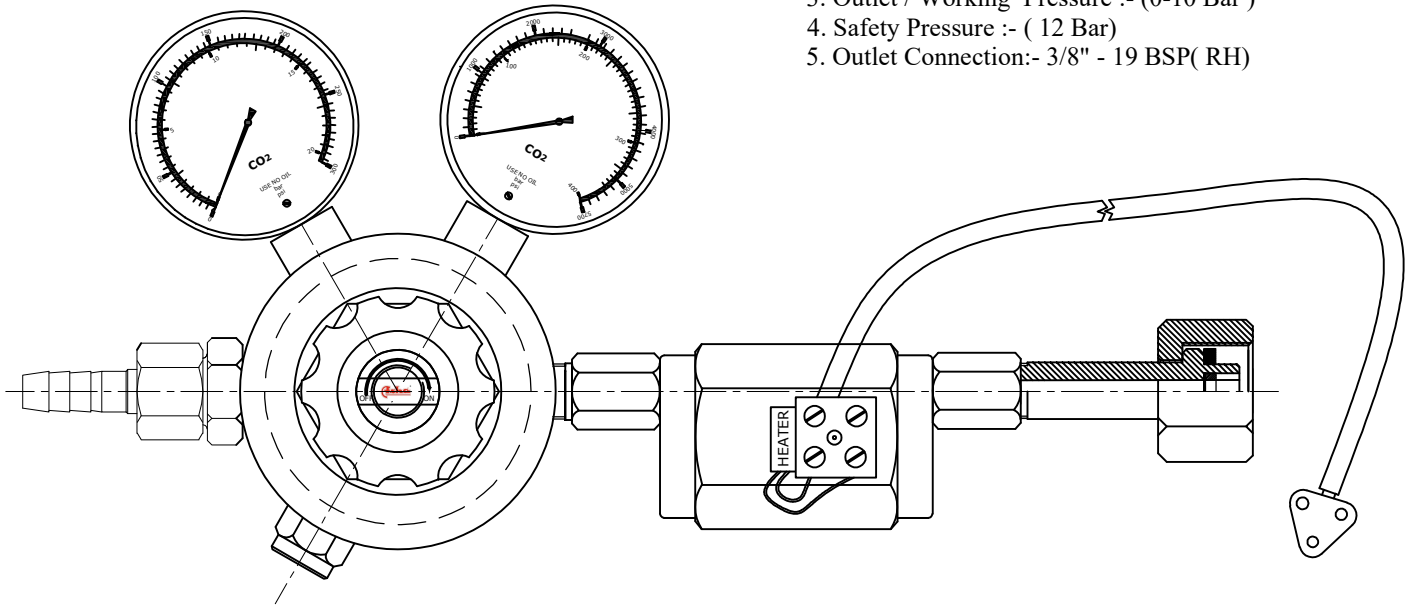


Specification :-

1. Single Stage Double Meter Carbon Dioxide Regulator With Heater (85° C, 220 V)
2. Inlet Pressure :- (0-400 Bar)
3. Outlet / Working Pressure :- (0-10 Bar)
4. Safety Pressure :- (12 Bar)
5. Outlet Connection:- 3/8" - 19 BSP(RH)



SECTION

Inlet Connection (Carbon Dioxide)
W21.8 -1.814 (RH)